

Michigan DOT Connected Vehicle Initiatives

Collin Castle

NOCoE Regional Forum

Session 1: Innovation and Emerging Technologies

September 13th, 2016



Session 1: Innovation & Emerging Technologies

Infrastructure Readiness for Connected Vehicles & Traffic Signal Performance Measure Applications

- Number of state sponsored/hosted pilot programs in the following areas:
 - Connected vehicles - **Multiple**
 - Automated vehicles - **Multiple**
 - Fully autonomous vehicles - **None**
- Which wireless technologies does your agency currently use for infrastructure-based (I2I/V2I/I2V) communications?
 - 5.9 GHz DSRC - **Yes**
 - Commercial Cellular Services - **Yes**
 - WiMax - **Yes**
 - Wi-Fi - **Yes**
 - Bluetooth - **No**
- Does your agency have a formal institutional structure for overseeing the deployment/management of strategies to support I2I/V2I/I2V communications? - **Yes**

Session 1: Innovation & Emerging Technologies

Infrastructure Readiness for Connected Vehicles & Traffic Signal Performance Measure Applications

- Number of signals currently broadcasting Signal Phase and Timing (SPaT) info: **16 (Approx. 100 including MI partner agencies)**
- Number of SPaT broadcast deployments currently planned by 2020: **TBD**
- Number of other roadside units (RSUs) broadcasting infrastructure information: **11**
- Approximate breakdown (%) of signal controller inventory by the following standards (intended to ensure compatibility with connected vehicle applications)?
 - ATC 5.2b: **Less than 5%, but became current standard in the last six months.**
 - Model 2070LX, E, L: **2%**
 - NEMA, Modern (e.g., Econolite ASC3, Ethernet port is present): **20 – 30 %**
 - Type 170, Modern (Ethernet port is present): **0%**
 - Incompatible (e.g., NEMA Legacy, Electromechanical): **60-80% (Based on Region)**

Session 1: Innovation & Emerging Technologies

Infrastructure Readiness for Connected Vehicles & Traffic Signal Performance Measure Applications

- Number of signal controllers currently running CV applications: **0**
- Number of signal controllers planned to run CV applications by 2020: **TBD**
- Do your current procurement specifications for traffic signal hardware (e.g., controllers) include language for SPM support? **No, but in progress.**
- Do your current procurement specifications for any ITS hardware (including signal controllers) include language for CV application support? **Yes, and more in progress.**

CV Infrastructure Deployment Plan

350+



Miles of equipped freeway and major arterial by 2019



MDOT V2I Applications



**Red Light Violation
Warning**



**Work Zone
Warning/
Management**

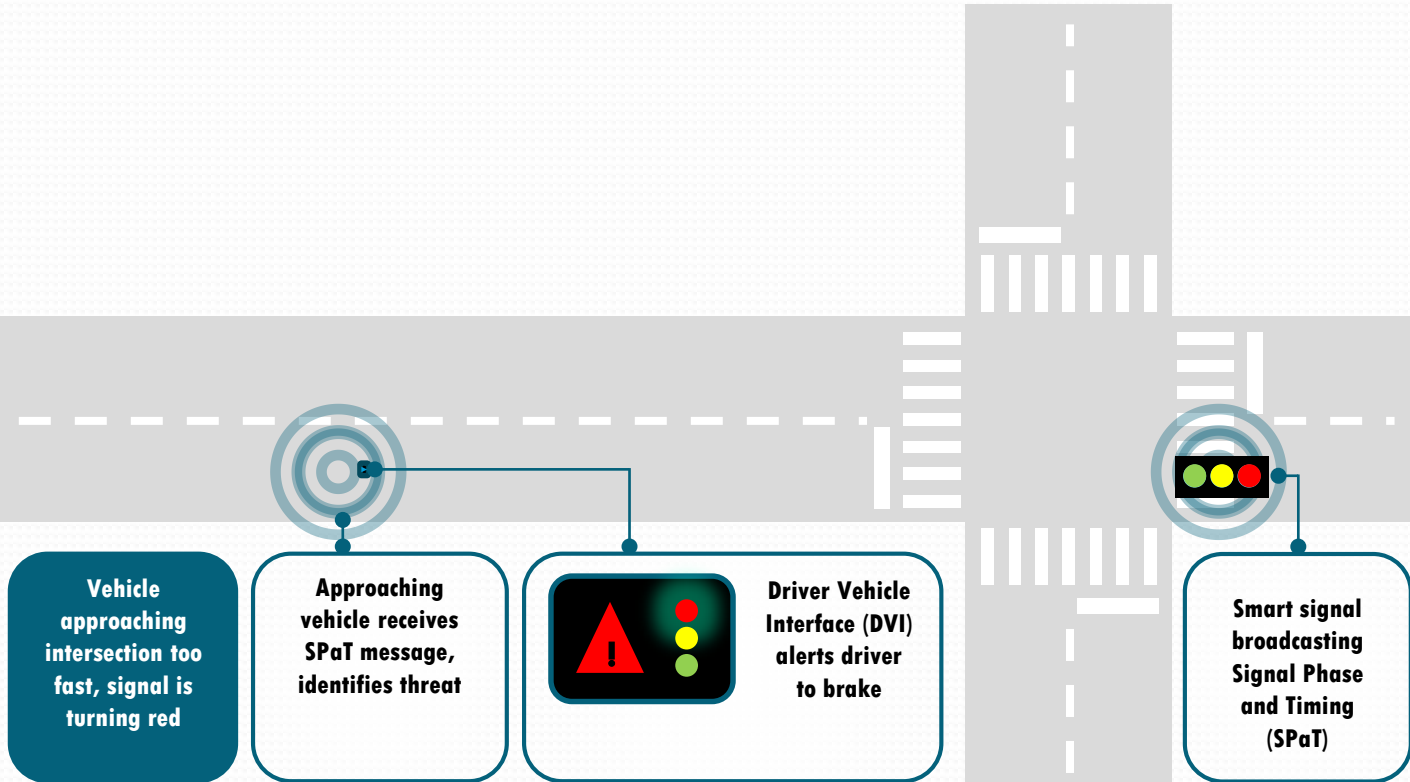


**Road Weather
Management**

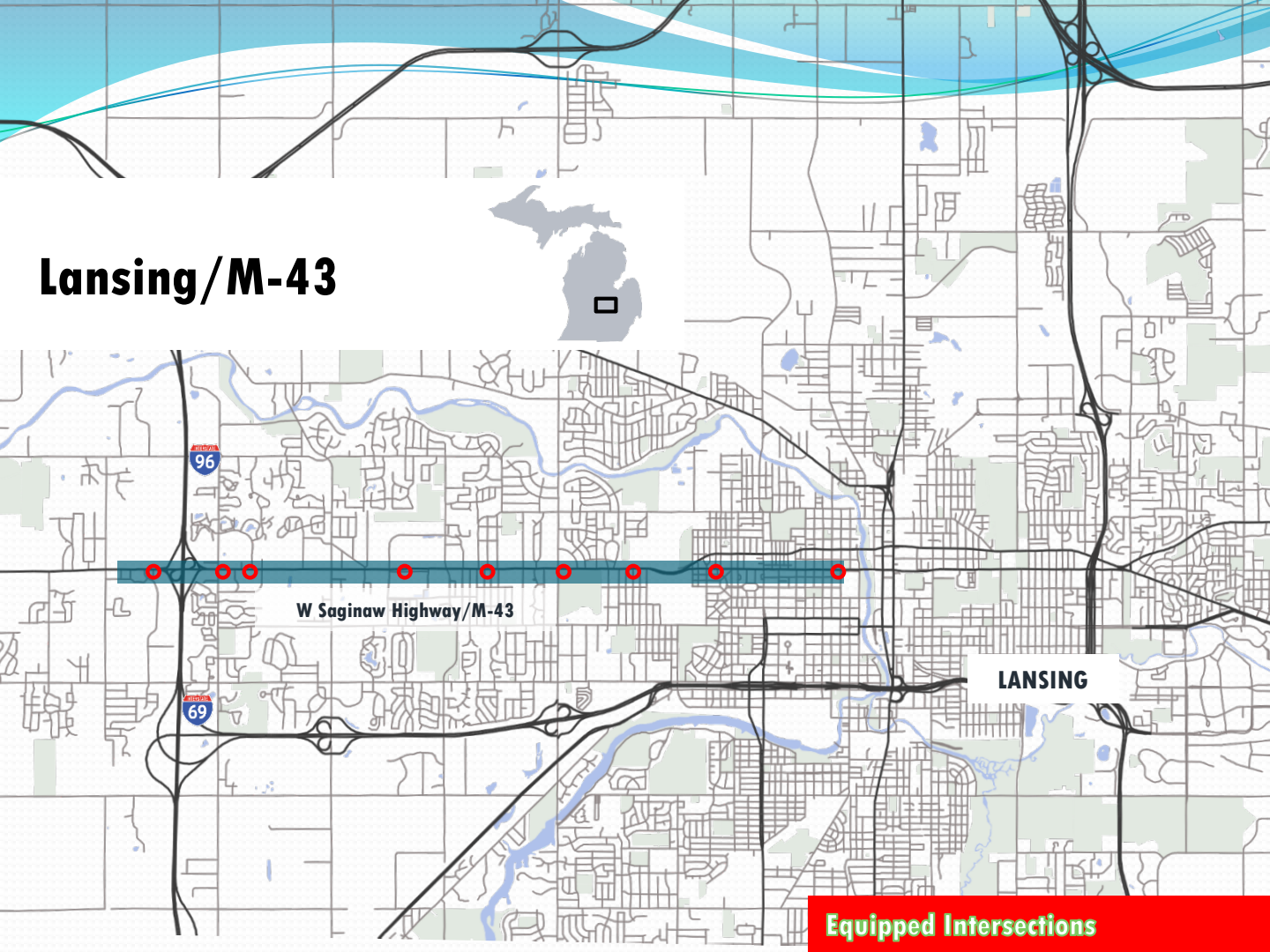


**Pavement
Condition**

Red Light Violation Warning



Lansing/M-43



W Saginaw Highway/M-43

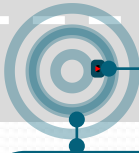
LANSING

Equipped Intersections

Work Zone Warning/Mngt.



Portable RSU sends work zone info to vehicle



Vehicle is approaching work zone too fast

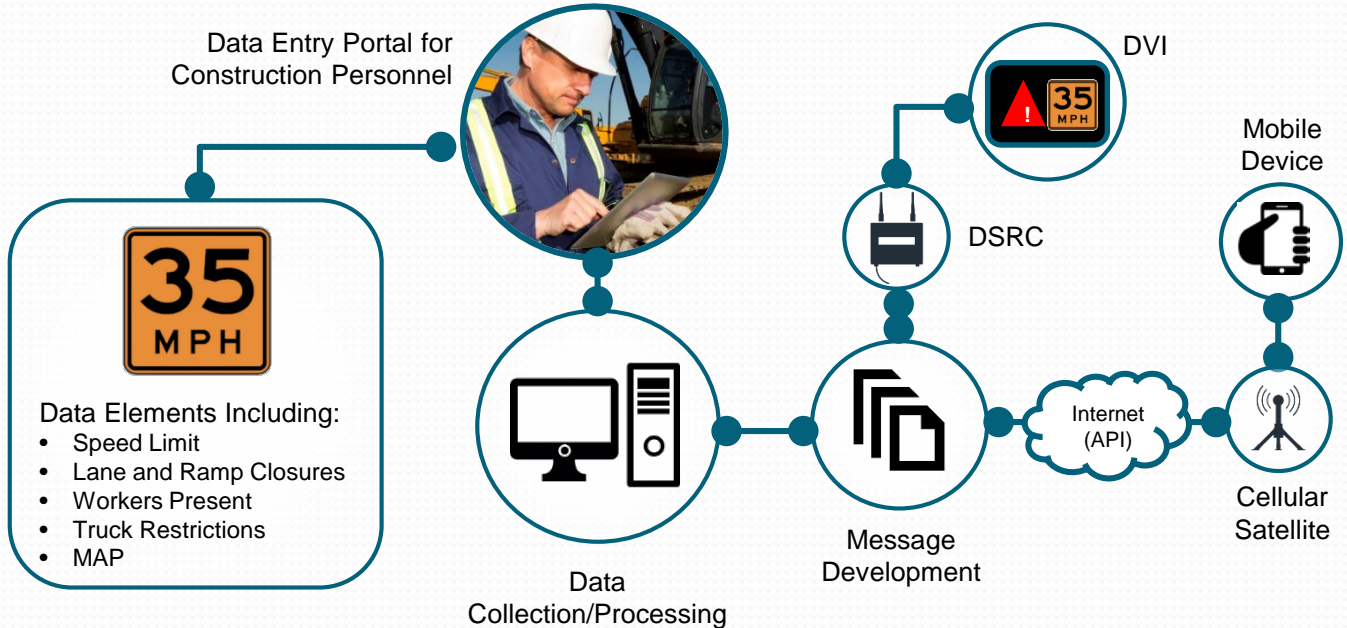
Approaching vehicle receives message from RSU with work zone information



Driver Vehicle Interface (DVI) provides warning of lane closure



Work Zone Data Input



DUAP – CV Data Use

- **Traditional System**

- Winter MDSS
- Mobility (HERE)
- NWS Warnings/Radar
- Lane Closures and Restrictions (LCAR)

- **Fixed ITS**

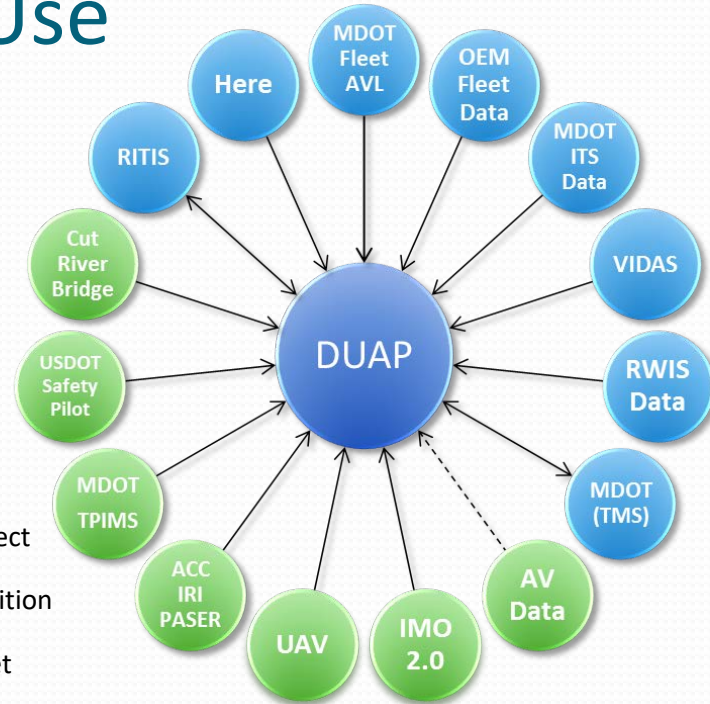
- ATMS (CCTV, DMS, MVDS counts)
- Road Weather Information System (RWIS) Stations
- National Weather Service (NWS) Stations

- **Mobile (Connected Vehicle)**

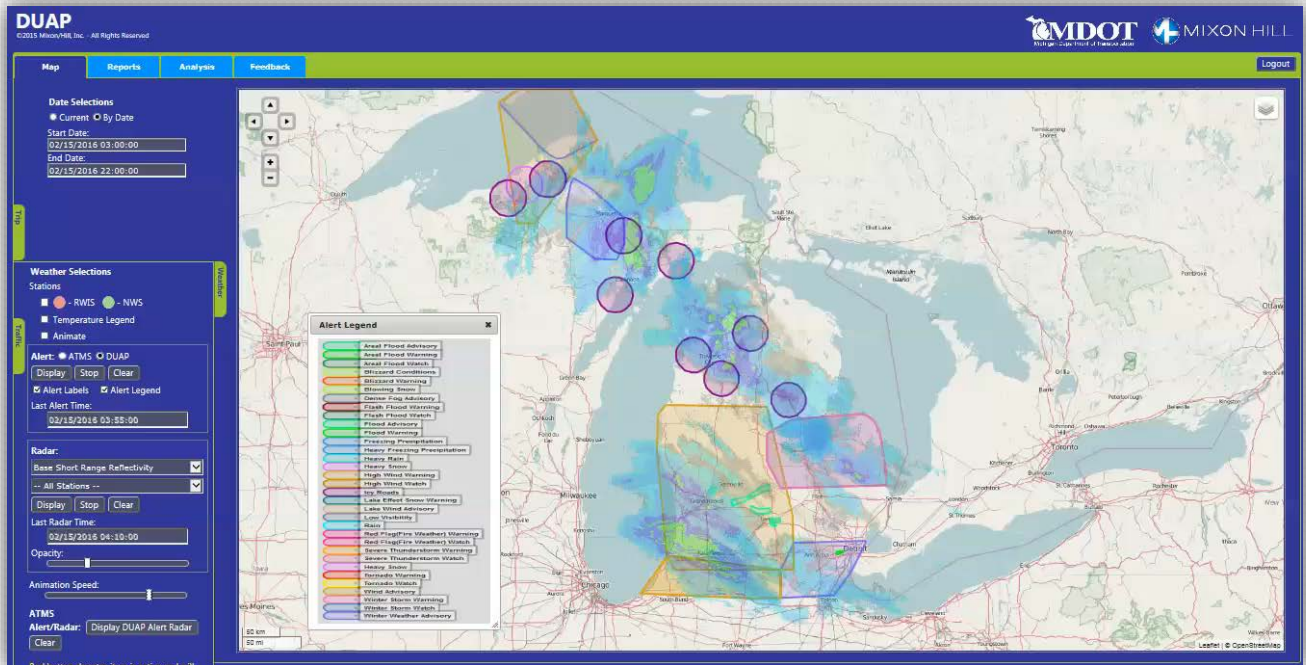
- Integrated Mobile Observations (IMO) Project Fleet
- Vehicle-Based Information and Data Acquisition System (VIDAS)
- Safety Pilot Model Deployment Project Fleet
- MDOT Automatic Vehicle Locator (AVL)

- **Other Future Data**

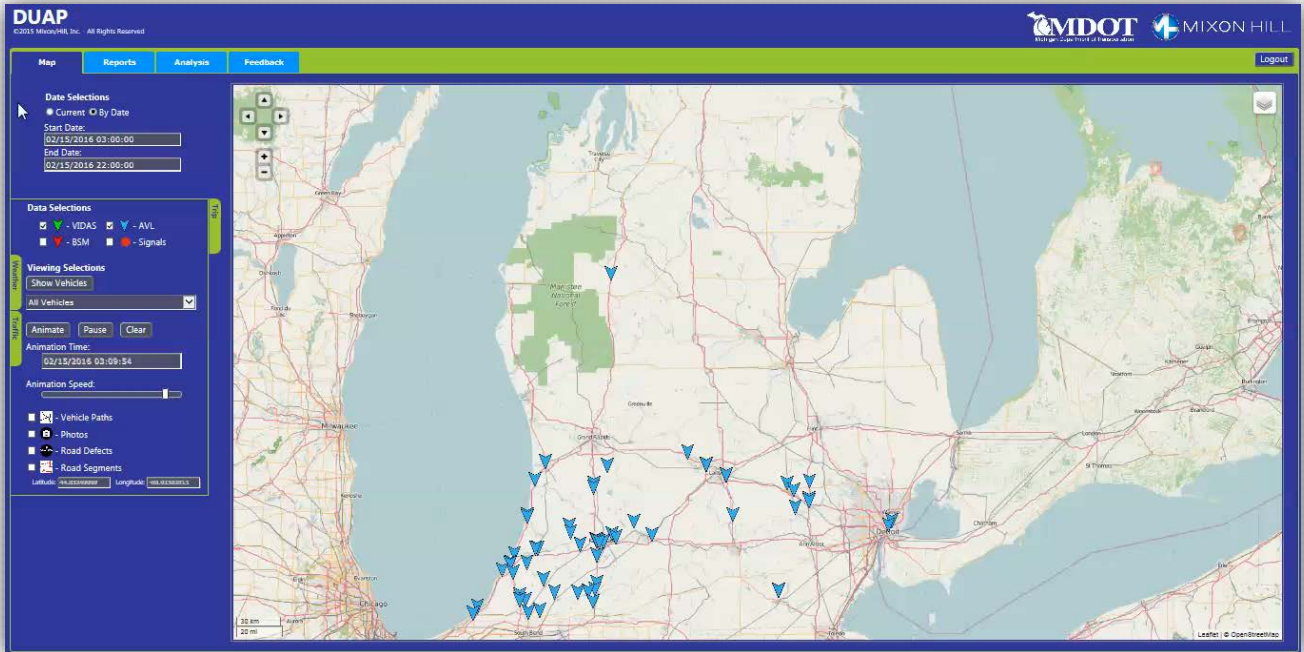
- Construction
- Maintenance



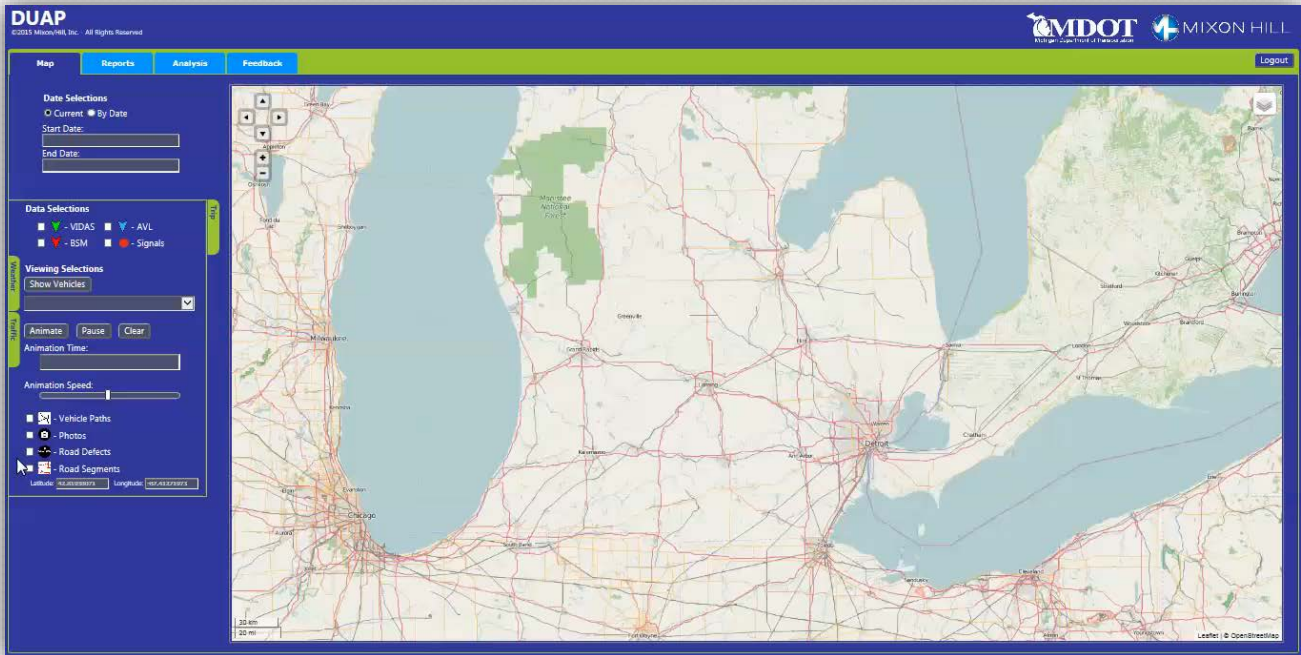
Weather Responsive Traveler Info (WxTINFO)



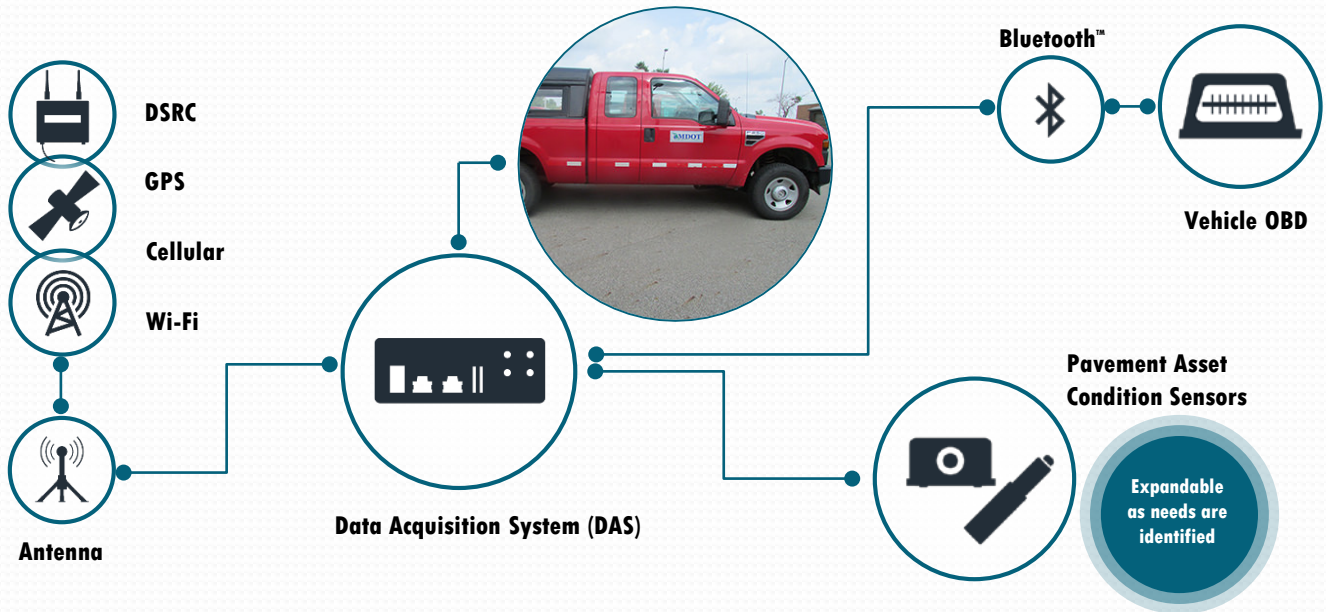
Winter Maintenance Trucks Data



Pavement Defect Detection



MDOT Fleet Deployments



Questions

Contact Info:

Collin Castle, P.E.

CastleC@Michigan.gov

